

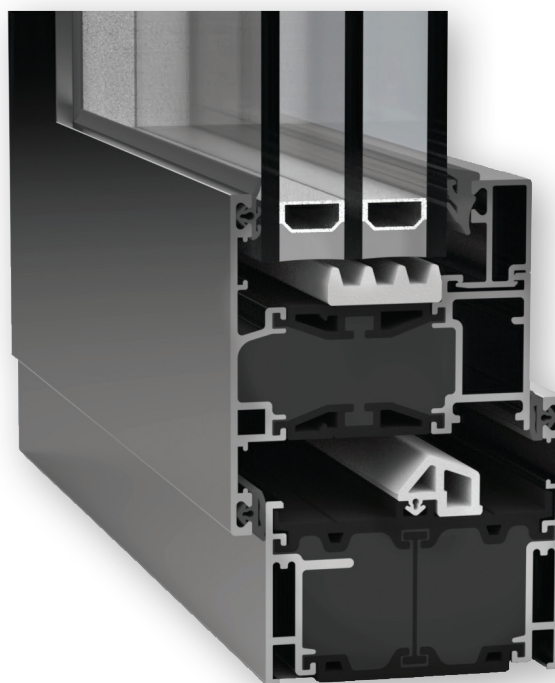
# XT66

## Performance Plus

Casement Window System



The AMS XT66 Performance Plus Window System is the latest offering from Architectural & Metal Systems in Cork. The XT66 Performance Plus window system builds on the unique and patented “XT” thermal break technology platform, developed in-house by AMS. Following on from the highly successful AMS XT66 window and door system, the XT66PP incorporates upgraded features that increase reliability and performance. These design enhancements offer the client increased thermal efficiency and weather tightness which have been achieved with the introduction of a new gasketing configuration and component upgrades. The XT66 Performance Plus System has been fully tested and is available in the same wide range of finishes that AMS offers.



# XT66

## Performance Plus

### Casement Window System

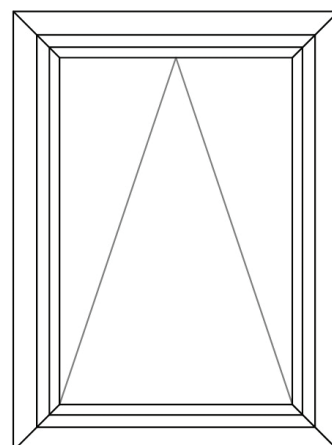
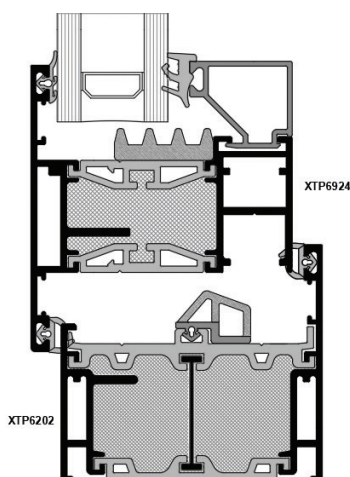
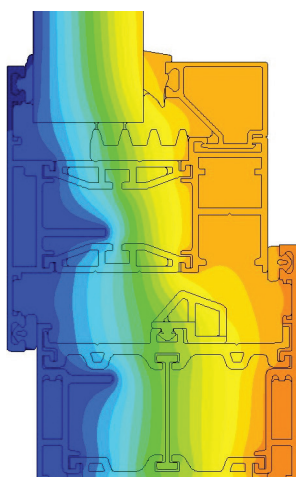
Measuring 66mm in depth, the XT66 Performance Plus suite of profiles has a range of equal and unequal leg sections to accommodate all anticipated framing options. The system can be glazed both internally and externally with double & triple glazed units from 28mm through to 48mm.

The XT66 Performance Plus casement window system has been fully tested per IS EN 14351-1:2006+A2:2016 and security tested to PAS 24:2016.

#### U-VALUE TABLE

Window U-values as low as 0.9 W/m<sup>2</sup>K can be achieved depending on glass design and are based on a window dimension of 1230mm x 1480mm with a full sash. U-values in the following table are calculated in accordance with IS EN 10077-1:2017 & LC:2020 and IS EN ISO 10077-2:2017. Profiles used in the calculation are the XTP6 202 frame and XTP6 924 sash.

GLASS U-VALUE (W/m <sup>2</sup> K)	1.2	1.0	0.6	0.5
XT66 Performance Plus Casement	1.38	1.23	0.94	0.87



#### SYSTEM PERFORMANCE

- Air Classification – A4: 600 Pa.
- Water Tightness – E1050: 1050 Pa.
- Wind Resistance – E2400: 2400 Pa.
- Resistance to racking – Class 3.
- Resistance to static torsion – Class 3.
- Resistance to repeated opening and closing – Class 3 (20,000 cycles).
- Operating forces – Class 1.
- Security – PAS24:2016.

#### FEATURES & FINISHES

- Opening options: top hung, side hung and parallel opening.
- Finishes included: single / twin colour, Decoral wood finishes and anodised options.
- Internally or externally beaded.
- Can accommodate units up to 48mm in thickness.
- Patented thermal break technology.
- CENsolutions Gold standard certification.
- Secured by Design certified.

Wallingstown, Little Island, Cork, Ireland. **T** +353 21 4705100 **E** info@ams.ie **www.ams.ie**

