



# EDENEX®

next generation building products

**DECKING**



Warm and durable, the perfect harmony.

# The new standard of durability.

Once in a generation, an innovative new product is developed that surpasses anything that has gone before. It doesn't happen by accident, rather it takes a culture of innovation and years of investment in research and development to perfect the product. Edenex® decking is such a product.

Edenex® decking brings two wonderful materials – wood and PVC – together to produce a product that has the best features of both for today's lifestyle. Edenex® decking has the natural, warm feel of wood *and* all the best features of PVC for today's lifestyle including durability, low maintenance (treating not required), textured slip resistant surface, splinter-free, will not split, and resistance to insects. Warm as wood, solid as a rock.

Edenex® decking is the latest innovation from the company that has placed continuous innovation at its core – Freefoam. Due to its many unique benefits, this revolutionary product is the product of choice for decking.

## Benefits of PVC based wood plastic composites

PVC based wood plastic composites have significant benefits over wood plastic composites based on other plastic materials as outlined below:

- Substantially higher strength.
- Substantially higher rigidity making it less subject to bending under load.
- Does not support fire.

# Features and Benefits

Due to the innovative nature of the product, Edenex® decking has a range of truly unique features and benefits including:

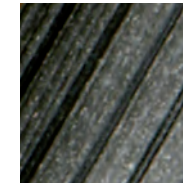
- ◆ Low maintenance (treating not required)
- ◆ Maximum durability
- ◆ High strength
- ◆ Slip resistant surface
- ◆ Natural, warm feel
- ◆ Water resistant
- ◆ Splinter-free
- ◆ Will not warp
- ◆ Will not split
- ◆ Resistant to insects
- ◆ Available in a range of colours
- ◆ Easy to install with hidden, snap-together system

# Colours

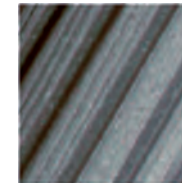
Edenex® decking is available in a range of three beautiful colours including Chocolate Brown, Pebble Black, Slate Grey.



Chocolate Brown



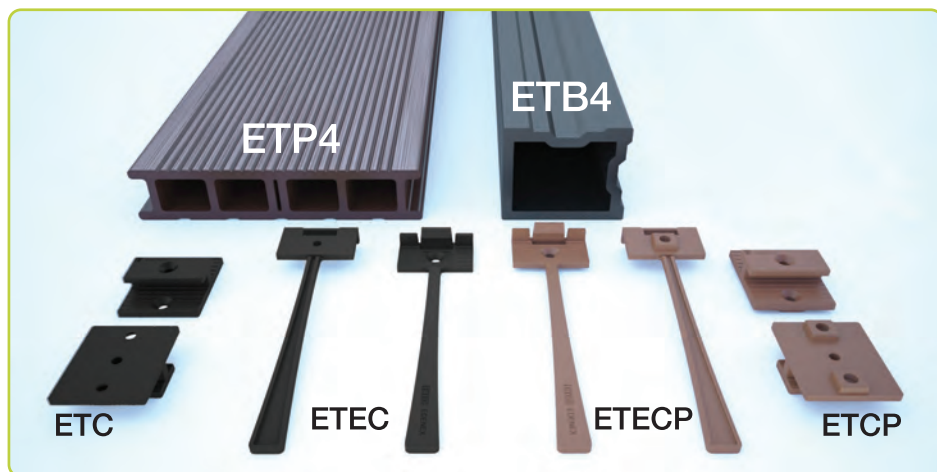
Pebble Black



Slate Grey



## Edenex Decking System Parts



## Dimensions

Plank (ETP4): Length = 4m; Width = 140mm; Thickness = 28mm.

Support Beam (ETB4): Length = 4m; Rectangular: 60mm x 50mm.

## Notes

1. Edenex® decking is easily worked with conventional woodworking tools. Nailing is not suitable due to the hardness of the material.
2. Edenex® should not be used as structural components.
3. Edenex® should be stored on a flat, dry surface. Adequate ventilation and support is required to avoid deformation.
4. A full installation guide is available from your local stockist or directly from Freefoam at the contact details on the back of this brochure. The installation guide is also available on the Edenex website ([www.edenex.net](http://www.edenex.net)).
5. All specifications, dimensions, descriptions and illustrations contained in any sales literature, quotation, or pricelist or other advertisement matter are intended merely to present a general idea of the goods that we sell. We reserve the right from time to time to make changes which are required to comply with any applicable safety or statutory requirements or which do not materially affect the quality or fitness for purpose of the goods you purchase from us.

### Edenex System Part Quantity Requirements

Part	Deck area (Square metres)			
	6m <sup>2</sup>	12m <sup>2</sup>	18m <sup>2</sup>	24m <sup>2</sup>
Planks (ETP4)	11	21	32	42
Beams (ETB4)	5	9	13	16
Clips (ETCP)	99	189	288	378
End Clips (ETECP)	10	18	26	32

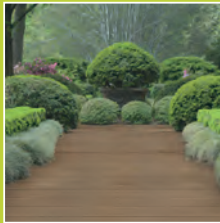
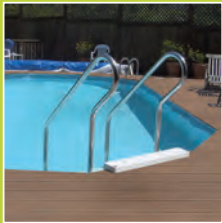
#### Notes:

1. Please note that the part quantity requirements outlined above are a general guideline only and actual requirements for specific installations may vary.
2. ETC and ETEC clips are used with standard timber joists or the flat faces of the decking beam while ETECP and ETECP clips are used with the indented faces of the decking beam.



EDENEX<sup>®</sup>  
next generation building products

DECKING





EDENEX®  
next generation building products

DECKING

Contact details:

[www.edenex.net](http://www.edenex.net)  
[sales@edenex.net](mailto:sales@edenex.net)

Freefoam Plastics  
Central Commercial Park  
Centre Park Road  
Cork  
Ireland  
T 021 496 6311  
F 021 496 5273

Freefoam Plastics  
77-83 St. James Mill Road  
Northampton  
NN5 5JP  
UK  
T 01604 591 110  
F 01604 580 299