

xtra floor

Xtrafloor maintenance products as recommended by Clever Click

Our range of cleaning products have been specially formulated for use with Clever Click products and most vinyl, rubber and linoleum floors.

Xtrafloor Cleaner Maintainer

Our concentrated cleaner has a fresh aroma for routine cleaning. Suitable for use with all cleaning methods including manual, spray buffing and scrubber-drying. Availability: 1Ltr / 2.5Ltr

Xtrafloor Spot Remover

A ready to use cleaner with a fresh aroma. Formulated for removal of spills and other deposits. Availability: 500ml

Xtrafloor underlay - designed to be the perfect partner for Click as recommended by Clever Click

Adding to the already long list of benefits of using Clever Click, Xtrafloor underlay provides a fantastic foundation to your floor. Consisting of up to 93% natural raw materials, it is particularly suited for the floating installation under Clever Click.

- Smooths out small subfloor irregularities
- Easier installation
- Improved sound insulation and comfort
- Eco-friendly

Xtrafloor

Composition Permanent resilient underlayment including mineral fillers and Polyurethane binder.

Thickness Approx. 1.5 mm (+/- 0.1 mm)

Roll format Approx. 10 m x 1 m (10m2 per roll)

Weight per sqm 1.5 kg/m2

Weight per roll 15 kg/roll

Fire behaviour Bfl - S1 as per EN 13501-1

Footfall sound absorption Approx. 11db/EN 140-5

Technical information

		Wood	Stone
Product Information			
Level of use	EN 685	23 - 33 - 42	23 - 33 - 42
Total thickness	EN 428	ca. 4.50mm	ca. 4.50mm
Wear layer	EN 429	ca. 0.30mm / 0.55mm	ca. 0.30mm / 0.55mm
Wear layer PUR treatment		Superguard®	Superguard®
Total weight g/m ²	EN 430	ca. 7.680	ca. 7.680

Size and Packaging			
Planks A	EN 427	191mm x 1316mm	324mm x 655mm
Box planks A	7 pcs / box	1.76m ² / box	1.49m ² / box

Test Results			
Inflammability	EN 13501	Bfl-S1	Bfl-S1
Scratch resistance	EN 660-2	Class T	Class T
Squareness & straightness	EN 427	≤ 0.35mm (Planks A)	≤ 0.35mm (Tiles)
Slip resistance	EN 13893	DS	DS
Slip restraint	DIN 51130	R9 / R10	R9 / R10
Residual indentation	EN 433	≤ 0.10 mm	≤ 0.10 mm
Furniture leg resistance	EN 424	No cracks, no damage	No cracks, no damage
Curling	EN 434	≤ 2mm	≤ 2mm
Electrical resistance	EN 1081	≤ 10 ⁹ hm	≤ 10 ⁹ hm
Dimensional stability	EN 434	Norm: ≤ 0.25%, average result measured: ≤ 0.05%	Norm: ≤ 0.25%, average result measured: ≤ 0.05%
Heat insulation	EN 12524	0.25w/(m.K)	0.25w/(m.K)
Thermal resistance R	ISO 8302	0.0159m ² .K/W	0.0159m ² .K/W
Electrostatic performance	EN 1815	< 2kV	< 2kV
Fomaldehyde group	EN 717-1	E1	E1
Acoustic insulation	ISO 717-1	4dB	4dB
Castor chair resistance	EN 425	No damage to wearlayer, no delamination	No damage to wearlayer, no delamination
Stain resistance	EN 423	Very good	Very good
Light fastness	ISO 105 B02	≥ 6	≥ 6
Underfloor heating	EN 12524	Suitable, max 27°C	Suitable, max 27°C
Resistance to chemicals	EN 423	Very good	Very good
Warranty (year)		15 / 20 Residential	15 / 20 Residential

The warranty covers manufacturing defects and premature wear in the event of normal use.

- Scuff and Stain Resistant
- Residential Guarantee (20 Year)
- Commercial Guarantee (10 Year)
- Water Resistant
- Natural Look and Feel
- No underlay or glue required
- Patented technology
- Eco Friendly Product
- Quick and easy click installation
- Easy to clean and maintain
- Warm and quiet under foot
- Superguard
- Suitable for all rooms, including bathrooms
- Made in the EU
- No Delamination
- No glue marks

Whilst Clever Click has made every attempt to ensure that this information is accurate and reliable at the time of its publication, we cannot accept responsibility for any errors, omissions, inaccuracies or any changes that have occurred since the date of publication or for the results obtained from the use of such information.



CLEVER CLICK
Quick and easy luxury vinyl flooring

Summer Stone
36223

CLEVER CLICK

Quick and easy luxury vinyl flooring

- Installs over existing surfaces
- Suitable for under floor heating
- 10 year guarantee
- Non-slip safe surface
- Rapid installation (no glue or adhesives)
- Low maintenance

Thickness: 4.5mm
Wearlayer: PU 0.55mm



Smoked Oak 24935
Click 191mm x 1316mm



Warm Oak 24867
Click 191mm x 1316mm



Royal Oak 24572
Click 191mm x 1316mm



Barn Oak 24860
Click 191mm x 1316mm



Summer Oak 24432
Click 191mm x 1316mm



English Oak 24870
Click 191mm x 1316mm



Whitewash Pine 24115
Click 191mm x 1316mm



Country Oak 24837
Click 191mm x 1316mm



Dorato Stone
40879



Black Slate
970



Summer Stone
36223



Summer Stone 36223
Click 324mm x 655mm



Grey Stone 46968
Click 324mm x 655mm



Black Slate 970
Click 324mm x 655mm



Limestone Cool 232
Click 324mm x 655mm



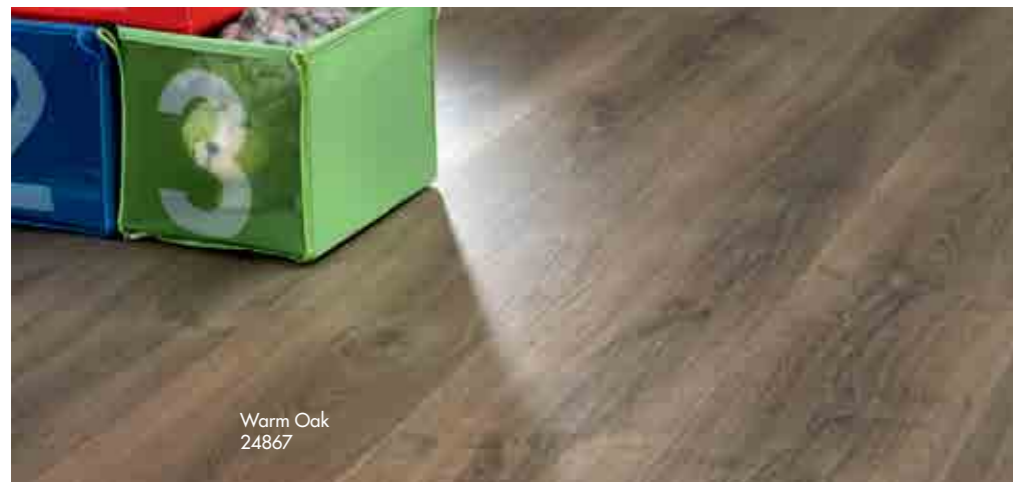
Star Stone 985
Click 324mm x 655mm



Dorato Stone 40879
Click 324mm x 655mm

Thickness: 4.5mm
Wearlayer: PU 0.55mm

All Wood ranges also available in Dryback 196mm x 1320mm. All Stone ranges also available in Dryback 329mm x 659mm



Warm Oak
24867



Smoked Oak
24935

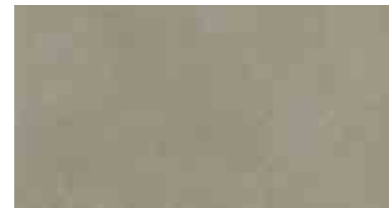
All of the above ranges are also available in a Dryback (stick down)

Please enquire at your local retailer for ordering details

Thickness: 4.5mm
Wearlayer: PU 0.55mm



Azuriet 46280
Click 324mm x 655mm



Azuriet 46860
Click 324mm x 655mm



Azuriet 46250
Click 324mm x 655mm



Azuriet 46985
Click 324mm x 655mm

Thickness: 4.5mm
Wearlayer: PU 0.55mm



Mountain Oak 24860
Click 191mm x 1316mm



Mountain Oak 2440
Click 191mm x 1316mm

All Wood ranges also available in Dryback 196mm x 1320mm. All Stone ranges also available in Dryback 329mm x 659mm



Mountain Oak
24860



Mountain Oak
24860

General floor maintenance

All floors should be swept and dust mopped daily, following which soiling and marking can be removed using the appropriate method described below. Before commencing work, put out signs to warn people that cleaning is in progress.

Daily sweeping and dust mopping

- 1) Pick up litter and thoroughly sweep the floor area.
- 2) Pick up debris with dustpan and brush or vacuum.
- 3) Vacuum walk-off mats and crevices at entrance(s).

Manual mopping - Ideal for small or congested areas.

- Manual mopping is used for soil removal in small or congested areas (including within large floors) and some mark removal. Spray cleaning may be required for heavier surface marking. (Note: In conditions of heavy soiling, perform a pre-wash by preparing a solution of Xtrafloor Cleaner Maintainer diluted in accordance with the label and pre-wash heavily soiled areas).
- 1) Using a two-bucket mopping system, apply solution using well-wrung mop to remove soiling. (Figure 1)
 - 2) Mop using overlapping strokes. (Figure 2)
 - 3) Rinse the mop frequently and change the solution as necessary.
 - 4) Allow entire floor area to dry thoroughly.
 - 5) Remove "Caution" signs. Ensure all equipment is cleaned thoroughly after use and stored safely.

Spray Cleaning - Ideal for small/medium size areas

- Spray cleaning can be used for light soil removal in small/medium size areas and removal of most scuff marks from all floor sizes. Pre-wash (see Manual mopping) if the floor is heavily soiled.
- 1) Follow daily sweeping and dust mopping instructions.
 - 2) Pour diluted Xtrafloor Cleaner Maintainer solution into a suitable spray container.
 - 3) Apply a fine mist of liquid on to an area of approximately 2 square metres at a time. Use a rotary buffing machine (approx. 450 rpm) fitted with a red 3M nylon scrubbing pad (or equivalent). (Figure 3)
 - 4) Work in parallel overlapping passes until the floor is clean and dry. (Figure 4)
 - 5) Remove "Caution" signs. Spray Clean/Spray Polish 2 sq.m at a time

Scrubber Drying - Ideal for large areas

- Scrubber dryers may be used for high productivity removal of soiling and some scuff mark removal. Spray cleaning may be required to remove heavier surface marking.
- 1) Follow daily sweeping and dust mopping instructions.
 - 2) Prepare solution of Xtrafloor Cleaner Maintainer as per label and pour into the dispensing tank. The scrubber dryer should be fitted with a red 3M nylon scrubbing pad (or equivalent).
 - 3) Scrub entire floor area.
 - 4) Remove "Caution" signs. Ensure all equipment is cleaned thoroughly after use and stored safely.

Tips - Dealing with spills

- 1) Spills of water, grease, food, chemicals and other foreign matter may cause the floor to become slippery.
- 2) Wipe up spills immediately with an absorbent cloth and then wash thoroughly using Xtrafloor Spot Remover as directed on the label or properly diluted Xtrafloor Cleaner Maintainer until the spill area is completely clean.
- 3) Allow the floor to dry thoroughly.

Notes

- 1) Clever products should not be buffed with any pad more abrasive than a red 3M pad (or equivalent).
- 2) Entrance mats, when properly serviced, can effectively remove any abrasive and foreign materials from foot traffic and cut down on tracked in water. Clever recommend a minimum of two full strides of entrance matting.

Preventative maintenance

- 1) Place non-rubber doormats at entrances to stop large amounts of dirt from getting indoors.
- 2) Use felt under furniture and chair legs. Rolling office chairs should be fitted with non-rubber casters.
- 3) Clean the floor at least once a week with a vacuum cleaner or mop. You will need to do this more often if you use the floor intensively.
- 4) We advise that you only use recommended cleaning products, as aggressive cleaning products may damage the floor.
- 5) Stiletto heels can also damage the floor.
- 6) Avoid long-lasting exposure to direct sunlight. Use curtains or blinds at peak times to minimise the effect of direct sunlight. Most types of floor discoloration under the influence of direct sunlight. To avoid colour discrepancies, you should move the floor coverings present with a certain degree of regularity.

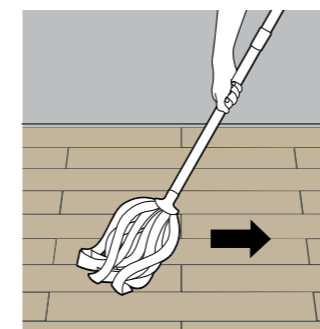


Figure 1

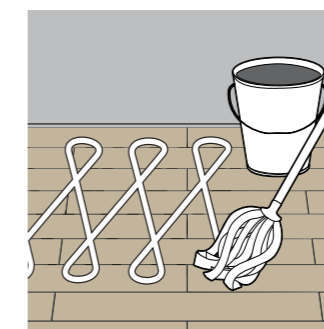


Figure 2

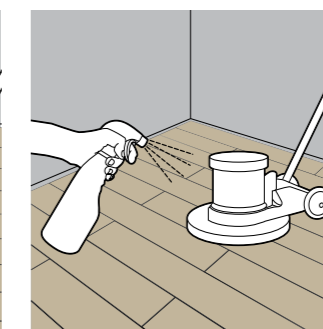


Figure 3

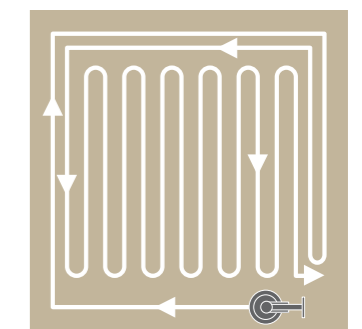


Figure 4

Clever Click installation instructions

Welcome to your brand new Clever Click design floor. Click is designed to offer all the stunning detail and outstanding natural beauty of Clever floors, but with quick and easy installation.

After a very short installation period, your Clever Click floor will bring you years of pleasure. However, it's important to read these instructions carefully and follow them during fitting, as the guarantee will not apply if the floor is not fitted in accordance with these instructions.

Recommended tools

- Broom and/or vacuum cleaner
- Tape measure
- Pencil
- Set square and ruler
- Utility knife
- Rubber mallet
- Tapping block

General conditions

The installation of Clever Click is straight forward and follows the same guidelines that apply to all quality resilient tile floors. Good preparation is essential for a trouble-free installation. Clever Click can be laid on concrete, timber, stone and many other subfloors, which have been suitably prepared.

Site conditions must comply with the relevant national regulations. Clever Click is not suitable for external installation or unheated locations but it can be used with under-floor heating providing it is switched off for 24 hours before and after laying (the maximum permitted surface temperature is 28°C/81°F).

Tiles and sub-floor must be allowed to stabilise to a consistent temperature between 18°C and 27°C (64°F and 81°F) for a period of 24 hours before and after installation.

Tiles must be stored flat.

Following installation, Clever Click should be protected from heavy traffic for 24 hours and must not be washed for 24 hours. Always follow other manufacturers' recommendations when using their proprietary materials for sub-floor preparation.

Preparation

- 1) The floor should be fitted at a room temperature of minimum 18°C/62°F and maximum 27°C/80°F.
- 2) Before installation, check all panels in daylight for possible defects or discrepancies in colour or shine.
- 3) Check that the tongue and groove of the click profile is free from dirt and undamaged.
- 4) For best results mix at least two packs when fitting to avoid repetitions in the pattern. It is also preferable only to use material from the same batch in a single room.
- 5) The surface beneath the floor must be sufficiently prepared in advance to guarantee successful fitting of the floor covering. In particular, it must be clean, dry, smooth, firm, level, free from defects and not contaminated with grease, oil or chemicals.

Step-by-step fitting instructions

Clever Click is a "floating" floor. Never glue or fix the panels to the surface below. The flooring can be installed wall-to-wall, however in large areas (greater than 50m²) or where the floor may be exposed to unusually wide temperature ranges (such as where under floor heating is used, in a conservatory or areas adjacent to a south facing window), then it is advisable to use a 5mm space around the edge, as appropriate.

For surfaces larger than 50m², we advise that an expansion joint of 5mm is created around the perimeter of the room. In addition, should a single wall or run be longer than 10 linear metres, then a 5mm expansion joint should be allowed around the perimeter. If you are uncertain of the requirements, please contact your retailer who can confirm the exact requirements.

The Clever Click system panels can be joined in two different ways; either tongue-in-groove or groove-in-tongue. The simplest procedure, however, is groove-in-tongue. The advantage of the Clever Click system is that it allows you to choose your own starting position.

Moreover, you may work either from left to right or from right to left, whichever is best for you. Depending on the direction in which you work, you are advised to begin from either a corner or a door. It is advisable to begin with the groove side of the plank towards the wall and work from left to right.

- 1) Measure the room carefully to determine the central axis, from which the first row to be laid is outlined.
- 2) Check whether the first row of panels needs to be narrowed. If not, the lower groove lip of the first row of panels need to be removed. Use a utility knife to neatly cut off the lower groove lip.
- 3) Begin by laying the first row in the corner of the room on your left hand side as you are looking at the wall. Always work from left to right and with the tongue towards yourself. (Figure 1)
- 4) Lay the first row in a straight line and click the head ends together. Put the short side of the profile into head end of the previous panel and press the panel downwards. It is recommended to use a rubber mallet for connecting the head ends so that the joint fits securely. Continue laying the first row in the same way until you get to the last piece. (Figure 2)
- 5) For the last piece, measure the last plank to ensure a tight fit to the wall. Then cut away the marked piece and fit the end panel in the same way as the previous panels. When cutting the panel with a utility knife, make sure that you cut through the wear layer before breaking the panel. (Figure 3)
- 6) For an attractive and natural appearance, we advise you to use the piece left over from row 1 as the first piece in the next row, as long as the remaining piece is at least 1/3 of the total plank length. Do this for all subsequent rows.

- 7) Fit the second row as you did for the first: start on the left side and slide the groove of the panel under an angle of about 25° over the tongue of the previous row and click the groove into the tongue by laying down the panel while pushing it firmly against the first row. (Figure 4)
- 8) Then fit the second panel by sliding the groove under at an angle of 25° into the tongue of the previous row. Position the corner of the head end against the previous panel and then drop the short side of the profile into the head end of the previous panel and push downwards. Use a rubber mallet for connecting the head ends so that the joint fits securely. Repeat until you reach the end of the row.
- 9) To ensure a firm Click installation, it is recommended that the planks are tapped together along the long edge with a tapping block and a rubber mallet. This will ensure that the Click mechanism is firmly locked during installation, providing a secure joint and avoiding any movement after the installation has been completed. (Figure 5)
- 10) To fit the last row of panels you will usually need to narrow them. Do this as follows: lay a panel on top of the previous row with the groove towards the wall, lay another panel upside down up to the edge of the wall and mark the panel underneath. Cut the panel to size and fit the last row. (Figure 6)
- 11) Door posts and heating pipes also need to be individually fitted. First cut the panel to the right length. Then place the panel next to the object and draw the correct fitting. Next, cut the panel to size. Doorposts can also be sawn to size if necessary to lay the floor beneath them. For cutting around difficult areas such as door posts, heating pipes and other interior furniture; the use of a jigsaw with the correct plastic cutting blades is suitable and will avoid unsightly cuts at the perimeter of the room.

Care and maintenance

Congratulations!

You have just installed a Clever Click design floor. Your new floor has been produced in accordance with the highest standards and will give you years of pleasure in your home.

Although Clever Click design floors are one of the easiest floors to take care of, it is best to follow the recommendations provided here for optimal protection of the factory finish and to keep your floor looking fresh.

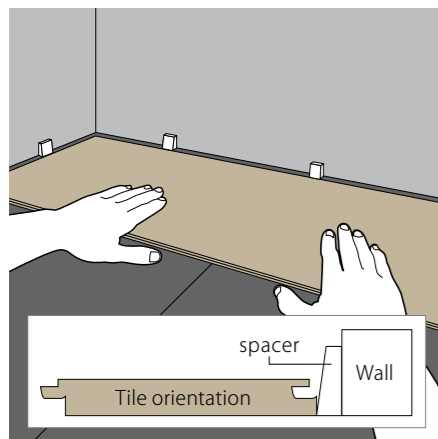



Figure 1

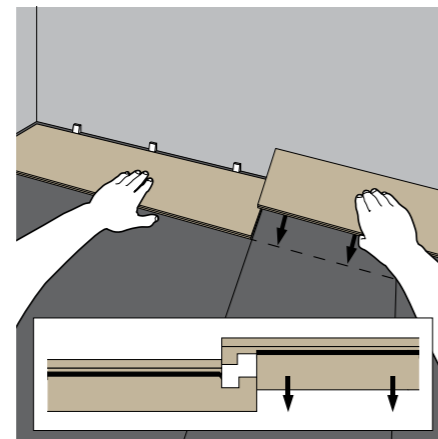


Figure 2

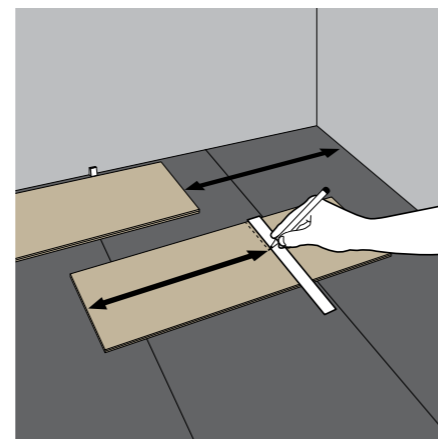


Figure 3

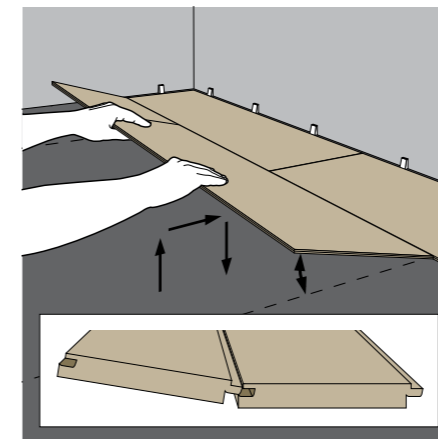


Figure 4



Figure 5

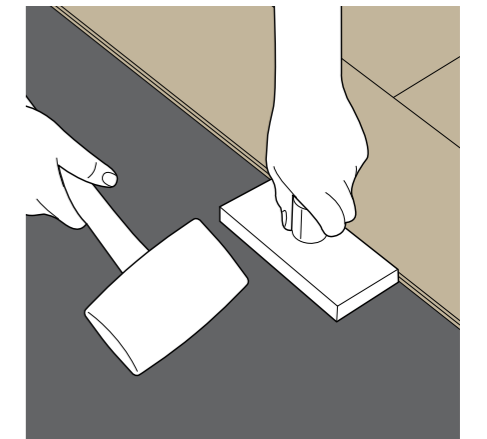


Figure 6